

K+DCAN USB Interface



Driver

Installation Manual

Page 1 of 4

©Jephis Technology Ltd.

Our K+DCAN USB Interface is based on the FTDI FT232RL USB to Serial Converter chipset, this chipset is one of the most reliable and stable chipsets available and have the best and widest driver support as well. We recommend you to always download the latest certified drivers directly from the FTDI webpage at

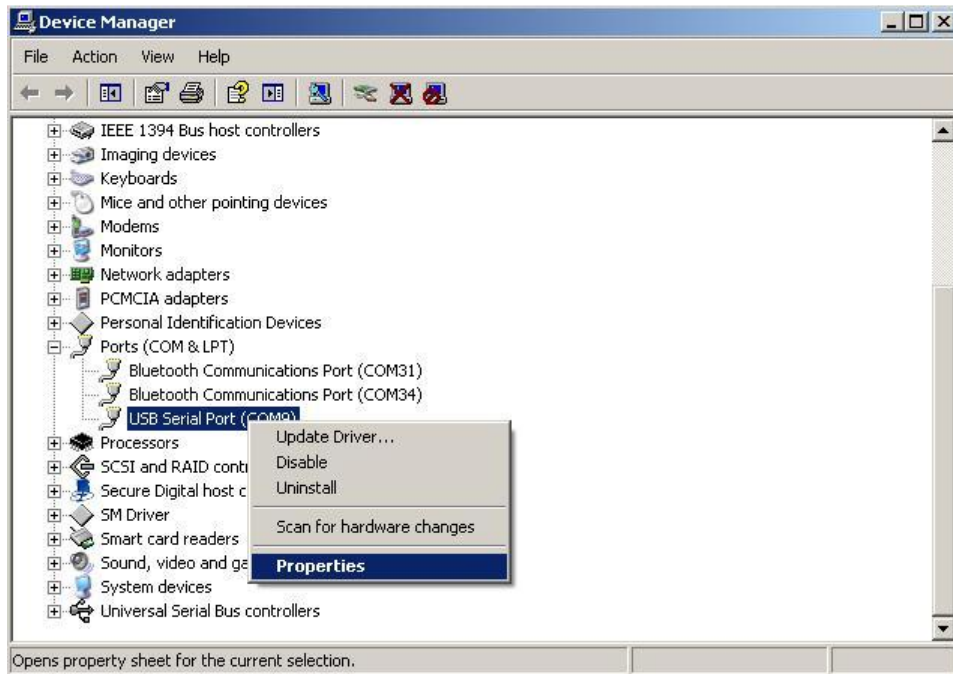
www.ftdichip.com

The actual direct link to the VCP drivers:

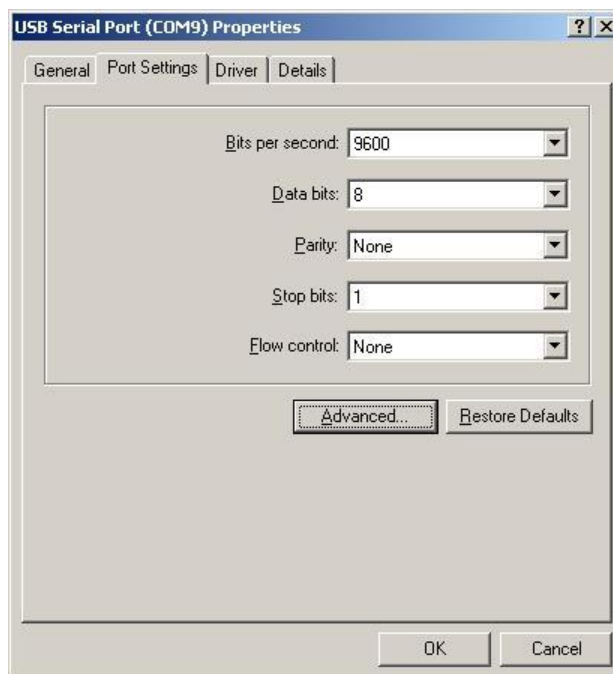
<http://www.ftdichip.com/Drivers/VCP.htm>

Chose the Driver package according to your operating system and download it to a folder of your choice, after download please extract them or run the executable installer according to what you downloaded.

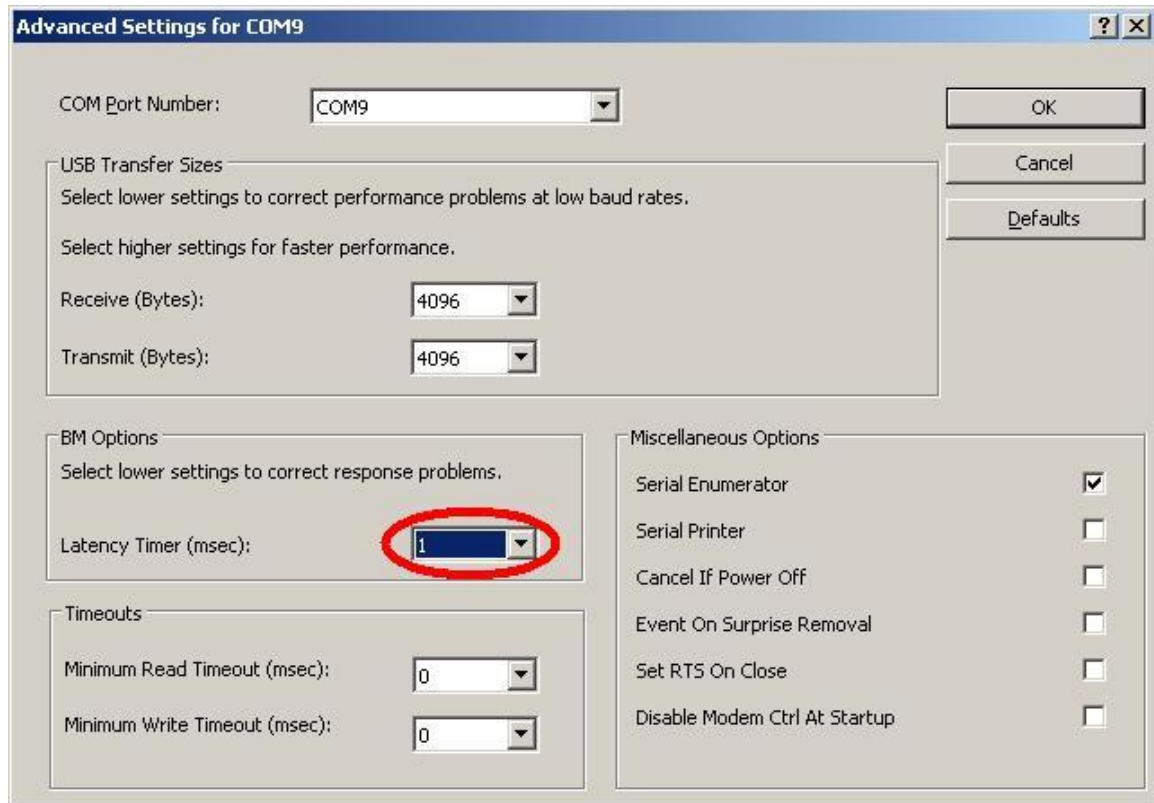
Plug in the K+DCAN Interface, Your operating system will detect it the interface and lead you trough the installation, if needed point it to the driver you previously downloaded and extracted.



After installation of the drivers, you will find a newly created Virtual Comport (VCP) please make a right click on it and click on Properties.



Open the Port Settings tab and click on Advanced.



Please set the Latency timer from default 16 msec. to 1 msec, doing this is important for a reliable and stable connection. You can also change the COM Port Number on top to any other free Number and confirm by pressing OK.

You are done with the initial setup right now and you only have to enter “Interface = STD:OBD” in the ediabas.ini as well as the correct COM Port Number you chose in the Advanced tab in the obd.ini

All the brands mentioned in this Manual belong to their respective owners.

Page 4 of 4

©Jephis Technology Ltd.